

Straight Snap in Releasable Connectors

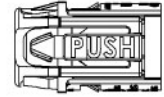
EZfitt®

Zinc die-cast, For AC, MCI-A, HCF steel and aluminum cable,
MCI cable, Continuous corrugated aluminum

EZfitt® products have been tested and listed by UL in accordance with UL's ground fault requirements, UL 514B

NO TOOLS TO INSTALL, NO TOOLS TO REMOVE!

Material: Zinc Die Cast, Spring Steel, Polycarbonate Insulator
**Easiest Cable Installation Connection,
Secure Hold, no Pull Out**



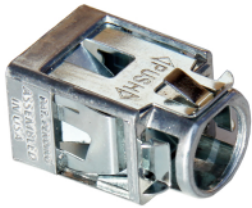
Patented



SSM 50



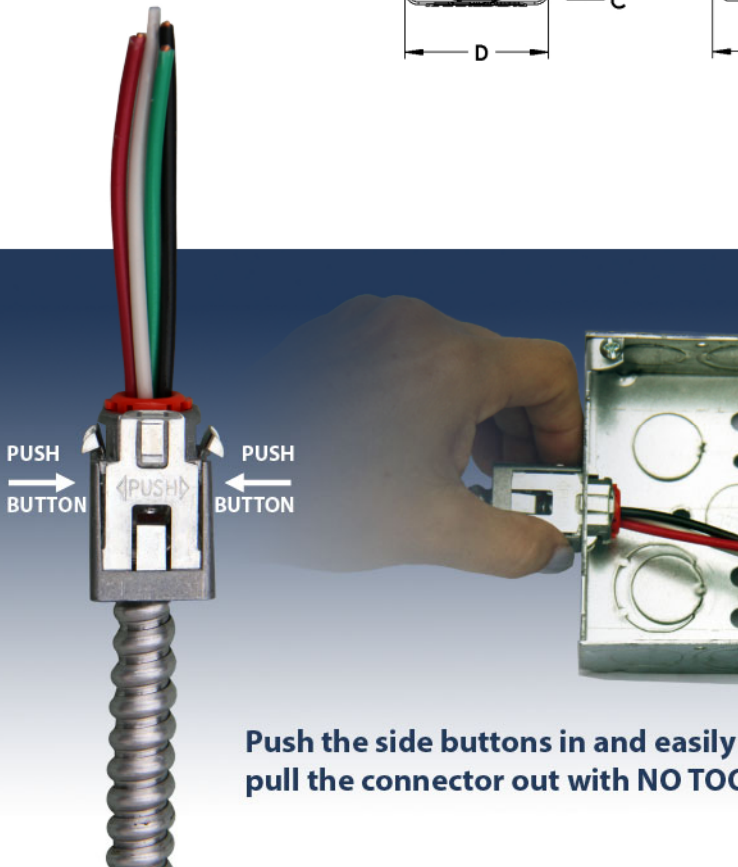
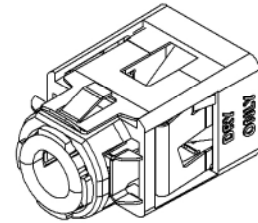
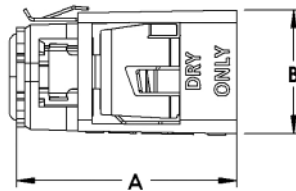
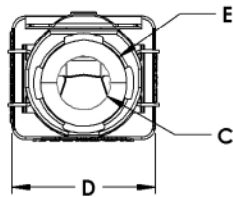
CATALOG NUMBER	UPC (GTIN)	KO SIZE	UNIT PKG	STD PKG	DIM A	DIM B	DIM C	DIM D	DIM E	CABLE RANGE
SSM 50 *	860009646278	1/2	100		1.54	0.86	0.37	1.00	0.61	.405-.612
	860009646285			500						
SSM 50 i †	860009646216	1/2	100		1.53	0.86	-	1.00	0.61	.505-.705
	860009646223			500						



SSM 50 i



* Provided with insulated throat.
† Applied for new MC-PCS cable.



Push the side buttons in and easily pull the connector out with NO TOOL

Snap the cable inside, hold connector by the push buttons, and Snap the cable and connector in to the KO hole.

Assembled in USA